



# GMT MONTHLY MEMBERSHIP PROGRESS REPORT

Results as of: 5/31/2020

## GMT Constitutional Area 5 - E, Group P

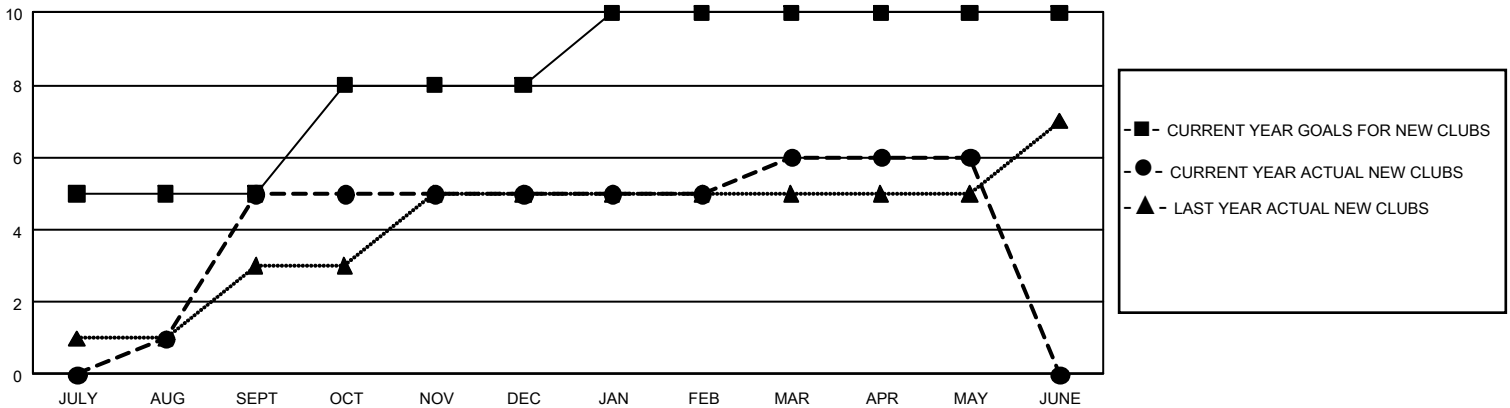
GMT: OPEN

REPORT DOES NOT INCLUDE CLUBS IN UNDISTRICTED AREAS.

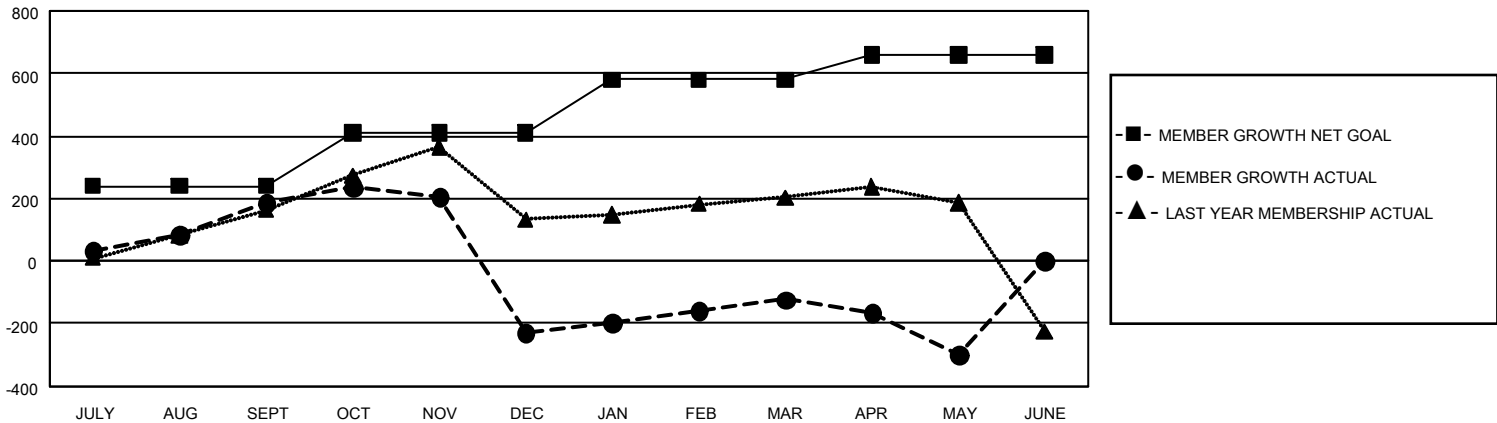
Clubs			
RESULTS FOR 2019-2020			
QUARTER	NEW CLUB GOAL	NEW CLUBS	DROPPED CLUBS
JULY/AUG/SEPT	15	5	0
OCT/NOV/DEC	9	0	2
JAN/FEB/MAR	6	1	2
APR/MAY/JUNE	0	0	0

Members			
RESULTS FOR 2019-2020			
QUARTER	MEMBER GROWTH NET GOAL	MEMBER GROWTH ACTUAL	DROPPED MEMBERS ACTUAL (including transfers)
JULY/AUG/SEPT	720	359	140
OCT/NOV/DEC	510	152	543
JAN/FEB/MAR	510	183	70
APR/MAY/JUNE	240	173	294

**GOALS AND ACTUAL NEW CLUBS CUMULATIVE**



**GOALS AND ACTUAL MEMBERS CUMULATIVE**



<b>DROPPED CLUBS: 4</b>	152 CLUBS OF 296 ADDED 1 OR MORE NEW MEMBERS	<b><u>GENDER DISTRIBUTION</u></b> MALE            3,944 (51.94%) FEMALE         3,649 (48.06%)
<b><u>DROPPED MEMBERS</u></b> DECEASED            28 CLUB CANCELLED      49 OTHER                 970 <hr/> <b>TOTAL                    1,047</b>	<a href="#">CLICK HERE FOR CUMULATIVE MEMBERSHIP DATA</a>	TOTAL FAMILY UNIT MEMBERS            411  FAMILY MEMBERS PAYING HALF DUES      222